



2023 CALIFORNIA SALMON FISHERY DISASTER

PRESENTED BY:

California Department of Fish and Wildlife

Chester Lindley | Senior Environmental Scientist (Supervisor)
California Department of Fish and Wildlife | Marine Region
Email: salmondisaster@wildlife.ca.gov

Industry Zoom Meeting, Tuesday, March 18, 2025
10:00 a.m.

2023 California Salmon Fishery Disaster

- A spend plan was submitted in May 2024 that outlined how the \$20.6M allocated by the Secretary of Commerce would be spent
- Qualifying criteria for each sector and the payment calculations are outline for each sector in the spend plan
- Spend plan can be found at CDFW Fishery Disaster page <https://wildlife.ca.gov/Fishing/Ocean/Disaster-Info>
- NOAA approved the spend plan in January 2025 making the funds available to PSMFC

Table 2. Spend plan allocation by sector.

California Salmon Fishery Sector	Spend Plan Allocation Dollar Amount	Spend Plan Allocation Percent
Commercial Salmon Trollers (Harvesters)	\$9,229,049	45%
California Salmon Council*	\$67,000*	0.3%*
Commercial Fish Processors	\$4,245,541	21%
Commercial Passenger Fishing Vessels	\$4,791,326	23%
In-River Salmon Guides	\$633,136	3%
Hatchery Production	\$1,500,000	7%
Admin. (PSMFC)	\$206,051	1%
Total	\$20,605,103	

*California Salmon Council amount is coming out of the Commercial Salmon Trollers portion, and is not summed with other line items presented in this table

Criteria for Eligibility

- Commercial Troll

- To qualify for disaster relief funds, an individual or party must have been the first owner of record of a Salmon Vessel Permit (SVP) in the 2023 permit year. To qualify for relief greater than the minimum of fees associated with maintaining an SVP (Table 3), the SVP must have had salmon landings in 2021 or 2022 on that permit.

- Commercial Fish Processors

- To qualify for disaster relief, a buyer must have made at least one qualifying purchase (i.e., documented on a fish ticket within CDFW's data systems) of salmon in either 2021 or 2022. Based on this criterion, an estimated 235 businesses or individuals, inclusive of fishermen licensed to make direct sales to the public (e.g., retail licensees), are eligible for relief within this sector.

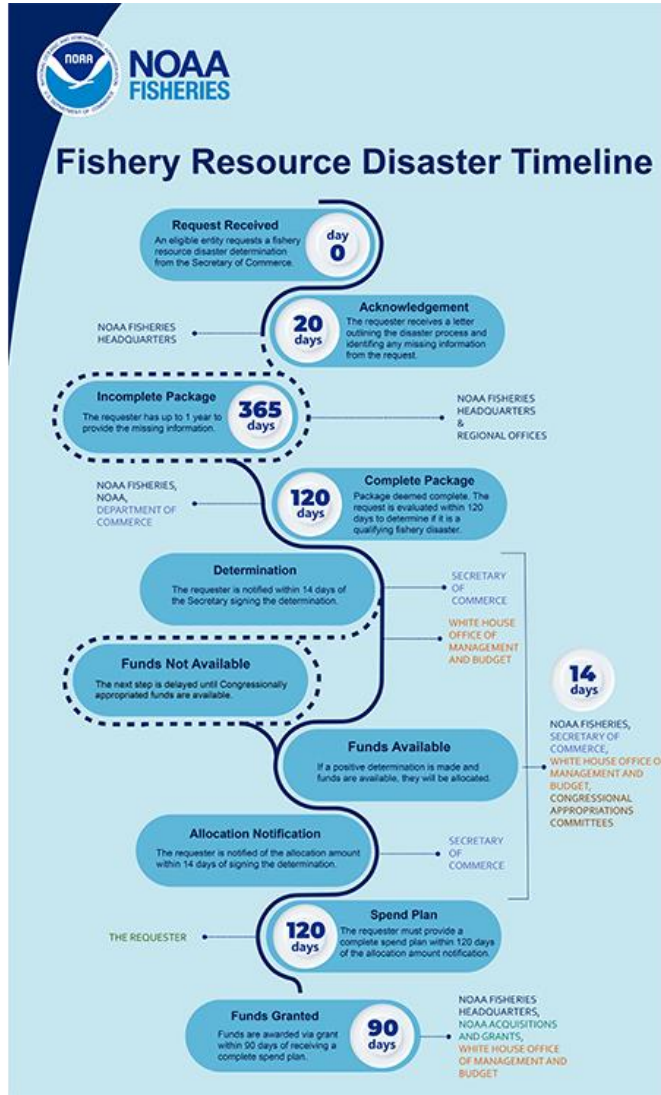
- CPFV

- To qualify for disaster relief, the licensed CPFV must have completed at least one salmon trip in 2021 or 2022 and must have carried a total of at least 30 anglers on salmon trips from 2018 through 2022. Salmon trips were defined as trips where the CPFV marked salmon as a target species, or the CPFV caught and retained chinook salmon. These trips were enumerated from logbook entries submitted to CDFW as required by California Code of Regulations, title 14, section 190(d). Trips that marked salmon as a target species but were clearly not targeting salmon (i.e., out of salmon season, fishing in areas outside of salmon distribution, etc.) were excluded.

- In River Guides

- To qualify for disaster relief funds, a licensed In-River Salmon Guide must have purchased a guide license between 2020-2023 from CDFW, indicate on their guide license application that they target salmon, and be able to prove business loss incurred due to the 2023 salmon season closure through a combination of tax records, business records, and guide logs from 2020-2022.

Fishery Disaster Relief Application Timeline



- Mailers were sent to eligible parties the last week of February 2025 and these went to the last address on record based on CDFW licenses
- PSMFC application portal opened on March 3rd 2025 and will remain open until 11:59pm on Sunday June 1st 2025
- If you have not received a mailer by March 17th contact CAFishDisaster@psmfc.org, you will need the UniqueID included in that mailer to apply
- Payments cannot be made until the close of the application period and late applications will not be accepted.

Things to Consider When Applying

- Printed applications have not been created and are not available, applicants must apply through PSMFC portal
- If you are submitting applications for more than one sector you must use link provided on PSMFC website to not run into issues with already having a user set up (<https://fs2.formsite.com/r5VtxP/wguakkxdun/index>)
- Specific to in river guide sector you will have an additional worksheet to complete outlining loss before applying for relief, this process is explained in the application portal and more information can be found at PSMFC website
- You should receive confirmation that your application was submitted successfully. Applications that are started but not submitted will not be accepted, so please submit your applications when you're done

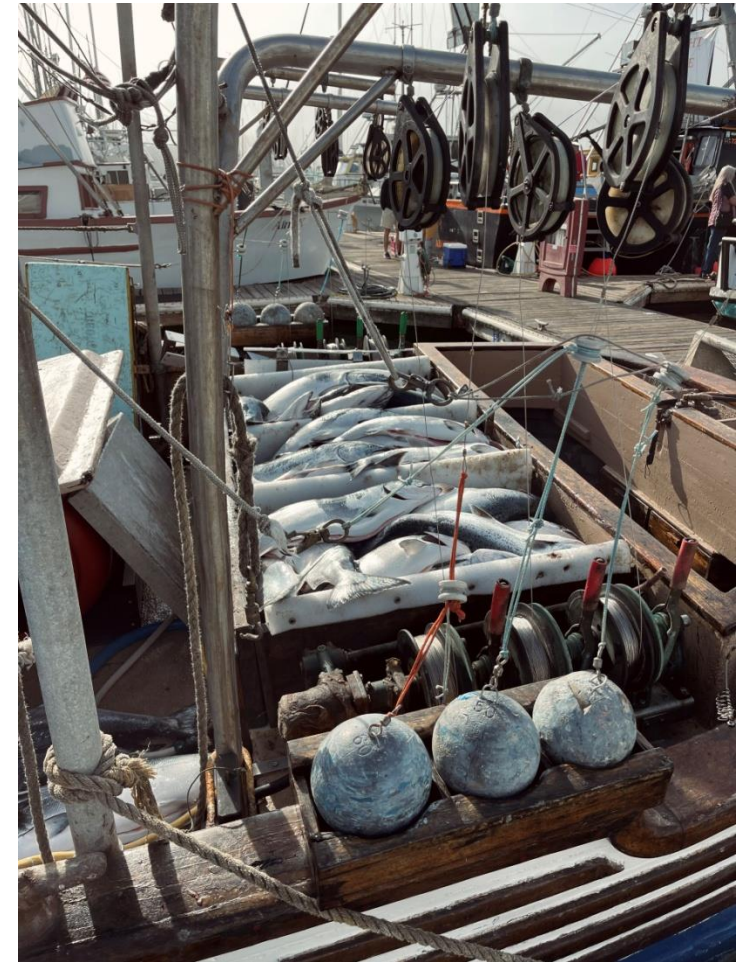


Photo by: O. Boeberitz

Questions?

- Questions specific to applications can be directed to PSMFC:
CAFishDisaster@psmfc.org
- General questions about salmon disaster can be directed to
CDFW: salmondisaster@wildlife.ca.gov